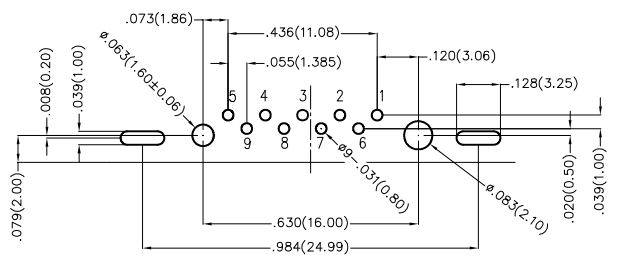
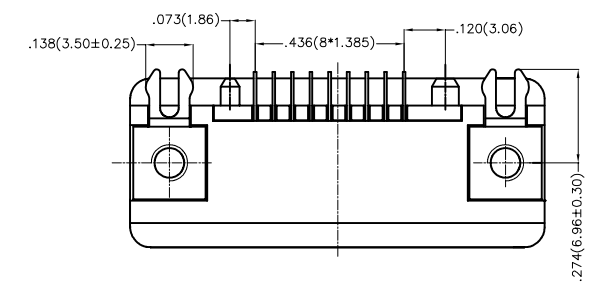
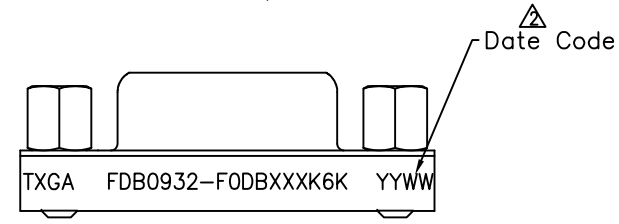
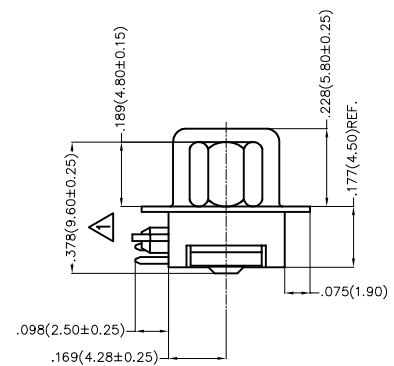
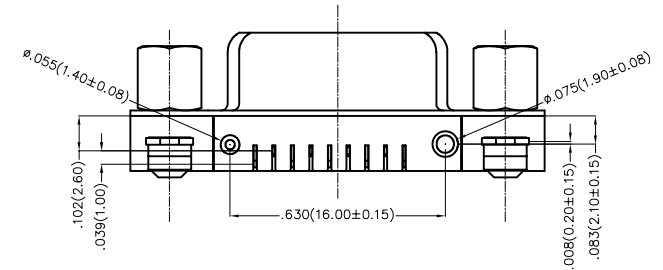
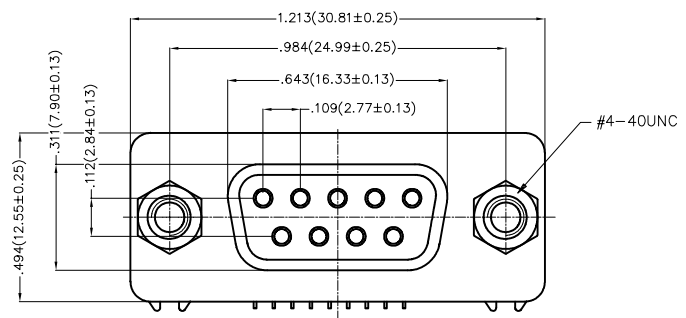


REV	LOCATIONS	DESCRIPTION	DATE	REVISER	APPD
1		Size change	23/JUN/20	KATE	CHERRY
2		Add marking code	13/Jan/25	NICK	LEO

SPECIFICATIONS

- Electrical
- 1.Current Rating: 3A AC(rms)/DC
 - 2.Voltage Rating: 250V AC(rms)/DC
 - 3.Contact Resistance: 25 mΩ Max
 - 4.Insulation Resistance: 1000 MΩ MIN /DC 500V
 - 5.Withstanding Voltage: 1000V AC r.m.s
 - 6.Temperature Range-Operating: -55°C~+105°C
- Material and Finish
- 1.Housing: PBT UL 94V-0
 - 2.Contact: Brass/Gold plated or Selective gold in contact area, tin on tail
 - 3.Shell: Cold Rolled Steel/Nickel Plated
 - 4.Screws: Brass/Nickel Plated



Recommended P.C.Board Layout

Ordering Information

FDB 09 32 - F0 D B X XX K6 K
 1 2 3 4 5 6 7 8 9 10

1 Category FDB- D-SUB	2 Circuits 09	3 Distinction No. 32	4 Type F0-Female	5 Assembly Layout D-DIP	6 Entry Angle B-90° Angle
7 Plating 1-Gold plated 3-Selective gold in contact area, tin on tail	8 Thickness of Plating 00-Gold Flash 03-3μ Custom plate available	9 Color-Resin K6-Black	10 Packaging K-Tray		

THIRD ANGLE PROJECTION	GENERAL TOLERANCES (UNLESS SPECIFIED)		APPROVE BY FRANK	DATE 18/JUN/13	PART NO. FDB0932-F0DBXXXK6K	ITEM NO. FDB0932	 Building Technology Cornerstone
	DESIGN UNITS Inch (metric)	X.±.012(0.30) X.X±.008(0.20) X.XX±.006(0.15) X.XXX±.004(0.10)	X'.±5' X'.±2' .XX'±1" .XXX'±0.5"	CHECKED BY CHERRY	DATE 18/JUN/13	TITLE D-SUB Connector 9 Circuits 90° Angle Female	
SCALE 5:1	SIZE A4		DRAWN BY KATE	DATE 18/JUN/13	THIS DRAWING CONTAINS INFORMATION THAT IS PROPRIETARY TO TXGA INDUSTRIAL ELECTRONICS(S.Z)CO.,LTD AND SHOULD NOT BE USED WITHOUT WRITTEN PERMISSION		REV 2 SHEET NO. 1/1